



5 New Union Square, London  
SW11

GARTON JONES.COM





# 5 New Union Square, London , SW11

GARTON JONES.COM

9 Albert  
Embankment  
London  
SE1 7SP

Sales +44 (0) 20 7735 1888  
nineelms@gartonjones.com  
www.gartonjones.com

## £1,000 Per Week

An amazing 2-bedroom apartment of approx. 790sq.ft (73sq.m) available to rent on one of the upper floors of Ambassador Building, Embassy Gardens, a popular luxury residential development in the heart of Nine Elms. This apartment benefits from an open plan reception room, modern kitchen with a large balcony offering great views. Interiors boast high ceilings, walnut parquet flooring, marble counter tops in the kitchens and thermostatically controlled comfort cooling and heating.

Residents of Embassy Gardens have a 24-hour concierge, cinema screening room, library & lounge, business centre, yoga studio, 2 private gymnasiums, and a very cool indoor/outdoor swimming pool, as well as access to the world-famous sky pool, connecting two of the towers at Legacy Building. Amenities such as District coffee shop, Darbys' restaurant, The Alchemist cocktail bar, as well as a Waitrose convenience store are located on-site but you are also close to a host of other local shops and restaurants on your doorstep. Nine Elms tube station, part of the Northern Line extension, is less than a 5 minutes' walk from Ambassador Building providing easy access into Central London and the transport links of Vauxhall Station are also within walking distance.

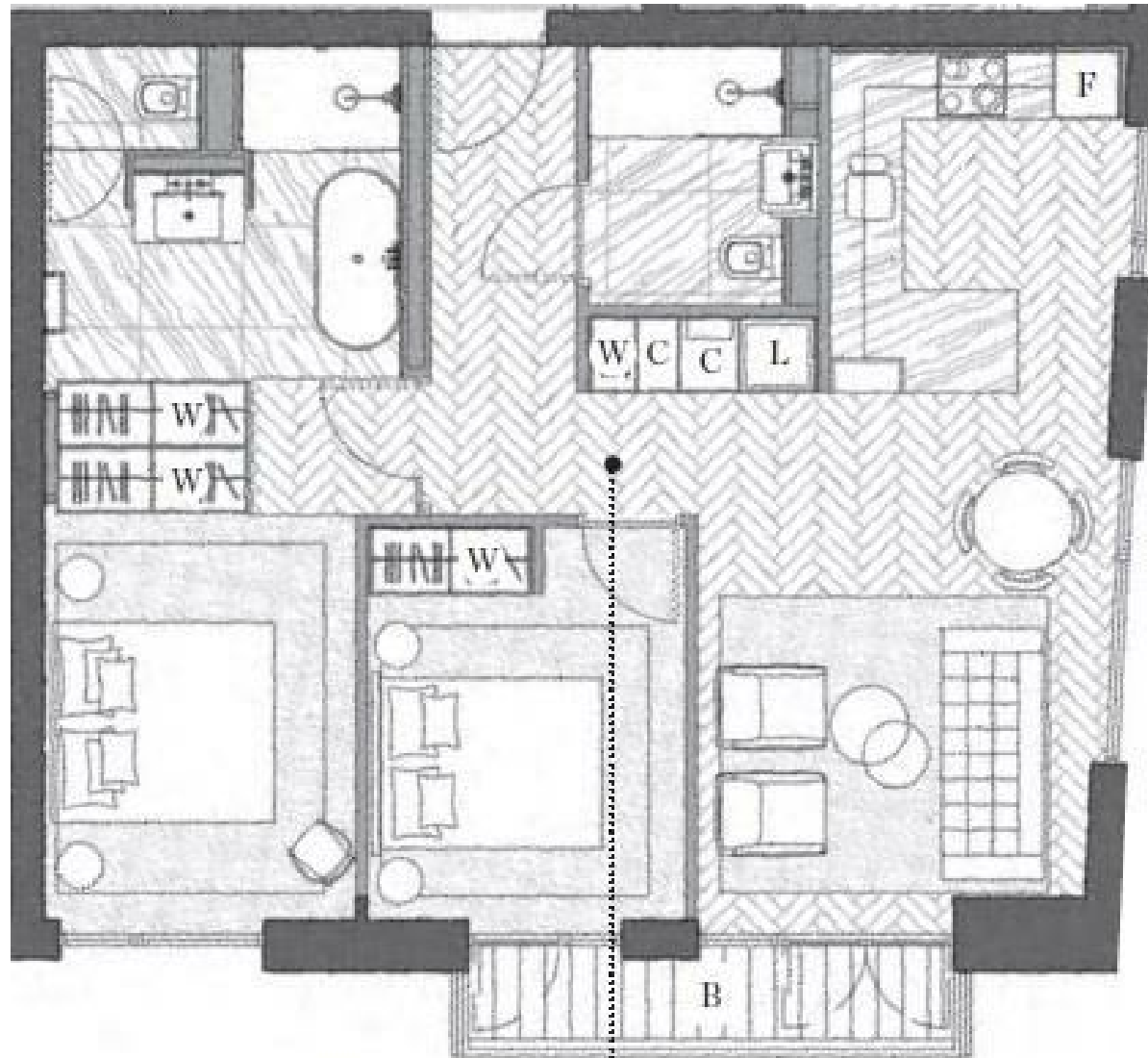
Please note furniture may differ to that shown in the current photos.

- Electricity Supply — Mains | Water Supply — Mains | Sewerage — Mains | Heating — Comfort Cooling
- Broadband & Mobile Signal : Check Coverage via Ofcom
- Parking: No Parking Included
- Lift Access
- Building Safety: EWS1 Available on Request
- Council Tax Band F (London Borough of Wandsworth)
- 6 Week Security Deposit
- Holding deposit equivalent to 1 week of rent
- Rent to be payable monthly in advance
- EPC Rating B (83)

- 2 Bedrooms
- 790sq.ft (73sq.m)
- Dual Aspect Open Plan Reception Room
- 2 Bathrooms (1 En-Suite)
- Balcony
- 2 Residents Gyms
- Sky Pool
- 24 Hour Concierge
- Cinema Screening Room & Business Suites
- 0.5 Miles from Nine Elms Tube Station



EPC certificate available on request.



790sqft



